

Inspection Checklists
&
Electric Meter Approved
Equipment Lists

Request for Inspection Checklist - Current Transformers

As a licensed contractor, you know that PCLP's specifications and procedures are less complicated than the national codes you deal with every day. However, please review this checklist to refresh your knowledge of PCLP's specification and procedural requirements. Please indicate "Y" in the applicable box under "Contractor Complete" column and N/A where items do not apply. Note that PCLP still requires a Cut-In card before scheduling for energization will take place.

	Contractor Completed	PCLP Inspection (Pass/Fail)
All Trans-S Combination Current Transformer/Meter Cabinets or separate CT Cabinets (and PT, if installed) and Meter pans are to be mounted outdoors. EXCEPTION: For Commercial installations, metering may be installed in a utility room designed specifically for metering equipment. You must obtain Company approval for indoor metering. All residential metering must be installed outdoors.		
Installed CT cabinet and Meter Pan are listed on PCLP's approved equipment list. All Approved Metering Equipment can be found on the Internet at: http://pclpeg.com/contractor-resources/ INSERT METER PAN MFG/CATALOG NUMBER: _____		
Offset nipple shall be used when placing the meter pan on top of the cabinet.		
The control cable conduit shall be 1 1/2 inch in diameter and the length between the cabinet and the meter pan shall not exceed 50 feet and are in sight of each other.		
Meter pan is installed and is between 4'6" - 5'6" above final grade.		
Dragline is installed on control cable conduit oulls that are 8 feet or greater.		
Ground lug is installed in the bottom of the cabinet and accessible with the CT's installed. Lug is suitable for #10 stranded wire is bonded to the neutral block with a stranded #10 wire with a green jacket.		
Mounting bard for Bar Type Current Transformers shall be 10 7/8" with the mounting studs on center.		
Service Conductore shall be mounted separately on their own mounting studs.		
Switchgear requires bus bars to be drilled on the line side. It should be tapped and equipped with 1/4 x 20 machine screws for taps that Company personnel will use to wire the KWH meter. Note: Prior approval shall be received from the Utility's Engineering Department for all Switchgear installations before purchasing.		
NO LB's or other conduits between the CT cabinet / PT cabinet and Meter Pan.		
The line and load bus shall be marked in the cabinet.		
The unit identifier (e.g. Store 1, Bakery, etc.) shall be permanently marked on the meter equipment, including CT door and meter pan.		

ELECTRICAL CONTRACTOR CERTIFICATION:

I Certify that the Metering installation has been constructed in conformance with the applicable Pike County Light & Power specifications and that all requiremnets stated herin are complete and the installation is ready for inspection by PCLP.

Project Name and Location: _____

Electrican (please print): _____ Signature: _____

Company: _____ Date: _____ Phone #: _____

Please FAX this completed checklist to _____ to the attention of: _____

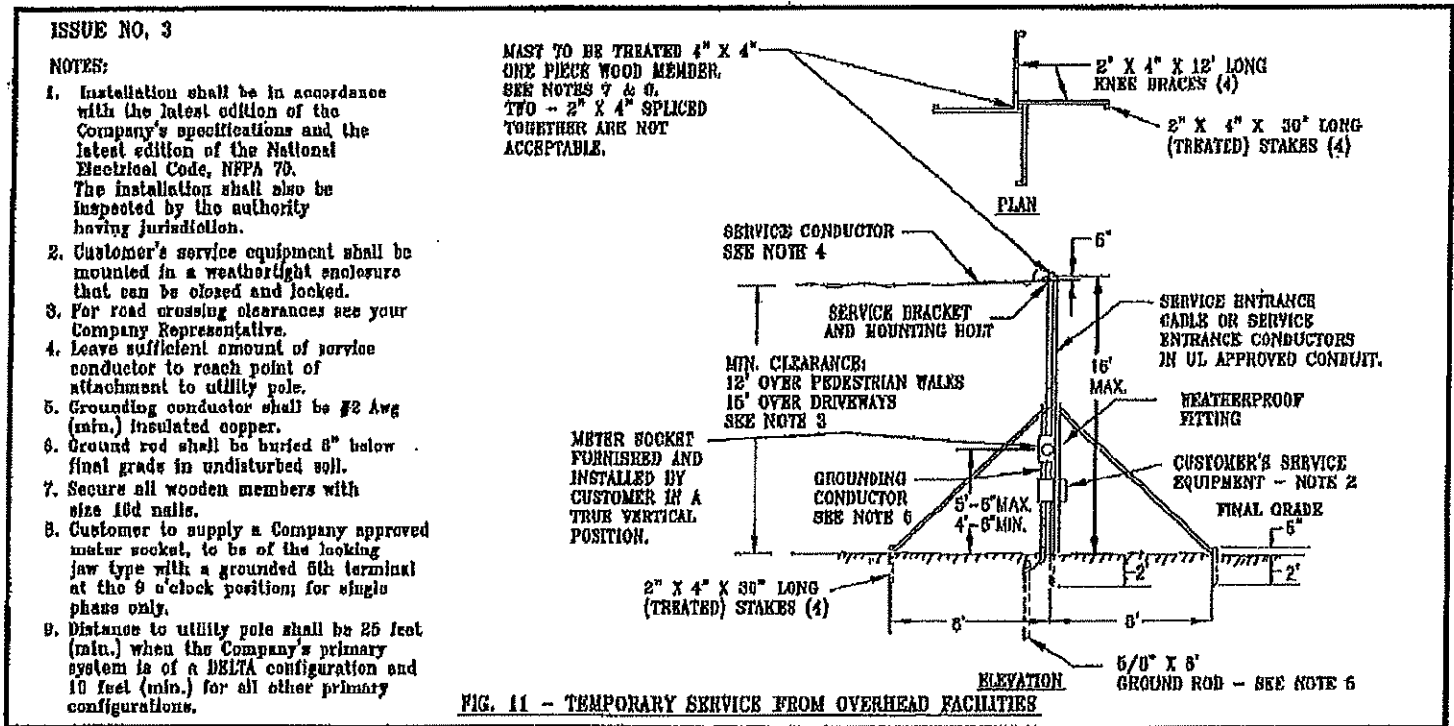
NOTE: Initial inspections are conducted by PCLP at no charge. Re-inspection fees may apply if installation fails initial inspection.

O/H TEMP

Request for Inspection Checklist - Overhead Service to Temporary Installation

As a licensed contractor, you know that PCLP's specifications and procedures are less complicated than the national codes you deal with every day. However, Please review this checklist to refresh your knowledge of PCLP's specification and procedural requirements. Please indicate "Y" in the applicable box under "Contractor Complete" column and N/A where items do not apply. Not that PCLP still requires a Cut-In card before scheduling for energization will take place.

Application #	Contractor Completed	PCLP Inspection (P/F)
Constructed in accordance with the illustration below, from the "General Specifications for Electric Installations"		
Service conductors are triplex or other self-supported cable, not building wire		



ELECTRICAL CONTRACTOR CERTIFICATION:

I Certify that the Metering Installation has been constructed in conformance with the applicable PCLP specifications and that all requirements stated herein are complete and the installation is ready for inspection by PCLP.

Project Name and Location: _____

Electrician (please print): _____

Signature: _____

Company: _____

Date: _____ Phone #: _____

Please FAX this completed checklist to _____

to the attention of: _____

NOTE: Initial inspections are conducted by PCLP at no charge. Re-inspection fees may apply if installation fails initial inspection.

Fax completed checklist to (570) 832-2989 to the attention of: _____.



209/Route 6


Roberts

Behind Collision shop

● Leaning pole

Straighten Pole 38094/48853

No stencil on pole

PC & P PIKE COUNTY & POWER	PIKE COUNTY & POWER	WORK ORDER	17Pike40
	Project: 10	Cross St: Roberts	By: G WAGNER \ B. Peifer
	Town: .Pa	Voltage: NA	Rev: REV 0
	Date:	Page: 1 OF 1	MAP 1
	Map:		

Inspection Checklist - Overhead Services

As a licensed contractor, you know that PCLP's specifications and procedures are less complicated than the national codes you deal with every day. However, Please review this checklist to refresh your knowledge of PCLP's specification and procedural requirements. Please indicate "Y" in the applicable box under "Contractor Complete" column and N/A where items do not apply. Not that PCLP still requires a Cut-In card before sheduling for energization will take place.

Application #	Contractor Completed	PCLP Inspection (P/F)
METERING REQUIREMENTS		
Metering constructed at company approved location.		
4' minimum clearance in front of metering and accessible		
Pike County Light & Power approved meter pan must be used. Approved lists available at http://pclpeg.com/contractor-resources/ Catalog Number: _____		
Meter pan center is at a height of 4'6" to 5'6" from grade.		
Meter pan is equipped with 5th jaw at 9o'clock position or 7th jaw at 6 o'clock for three phase applications.		
Meter pan is wired line side top and load side bottom.		
For 200 amp, 480v services only Non-fusible disconnect installed ahead of the meter shall have provisions to be padlocked and sealed by the company. Note - This is not the service disconnect.		
If multiple meters: The electrician shall "ring out" and label each meter location and each 'individuals units' sub-panel with a permanent marking clearly identifying the specific space or apartment being served.		
Multi-unit buildings must be identifiable by completed framing and electrical riugh in and marked with the fianl unit number.		
SERVICE LINE REQUIREMENTS:		
Work location is safe to traverse with no open trenches or holes		
Each service wire is identified at the Company's connection point and in the meter enclosure in accordance with NEC requirements.		
Service connection point is at least 3' away from any windows or doors and properly attached including guying where above roof.		
Service connection point is at least 18' and no more than 25' from final grade and will provide sufficient clearance height over road or pathway.		
Service connection point to distrubution line is unimpeded and does not trespass over neighboring property.		
At least 24" of each service conductor shall project beyond the service weatherhead		
For 100 and 200 amp services that are less than 100' long, screw egg or porcelain insulator installed at service entrance.		
For 300 and 400 amp services or those greater than 100' to 150', 704 bracket is installed at the service entrance.		

ELECTRICAL CONTRACTOR CERTIFICATION:

I Certify that the Metering Installation has been condtructed in conformance with the applicable PCLP specifications and that all requirements stated herein are complete and the installation is ready for inspection by PCLP.

Project Name and Location: _____

Electrican (please print): _____

Signature: _____

Company: _____

Date: _____ Phone #: _____

Please FAX this complated checklist to _____

to the attention of: _____

NOTE: Initial inspections are conducted by PCLP at no charge. Re-inspection fees may apply if installation fails initial inspection.

Fax completed checklist to (570) 832-2989 to the attention of: _____

Request for Inspection Checklist - Underground Service to Temporary Installation

As a licensed contractor, you know that PCLP's specifications and procedures are less complicated than the national codes you deal with every day. However, Please review this checklist to refresh your knowledge of PCLP's specification and procedural requirements. Please indicate "Y" in the applicable box under "Contractor Complete" column and N/A where items do not apply. Not that PCLP still requires a Cut-In card before scheduling for energization will take place.

	Contractor Completed	PCLP Inspection (Pass/Fail)
Pike County Light & Power approved Meter Pan must be used. Approved lists available at http://pclpeg.com/contractor-resources/ INSERT METER PAN MFG/CATALOG NUMBER: _____		
Constructed according to the illustration below, from the "General Specifications for Electric Installations"		

ISSUE NO. 3

NOTES:

- Installation shall be in accordance with the latest edition of the Company's specifications and the latest edition of the National Electrical Code, NFPA 70. The installation shall also be inspected by the authority having jurisdiction.
- 4" x 4" x 10'-0" Treated pole or post. (TWO 2" X 4" FASTENED TOGETHER NOT ACCEPTED).
- Customer's service equipment shall be mounted in weatheright enclosure that can be closed and locked.
- Grounding conductor shall be # 2 AWG (min.) insulated copper.
- Provide treated wood backboard for mounting meter socket trough in a true vertical position. Fasten backboard to 4" X 4" posts.
- Trench and cable to handhole or transformer by customer.
- Customer to supply a company approved meter socket, to be of the locking jaw type with a grounded 5th terminal at the 9 o'clock position; for single phase only.
- Distance to company handhole and/or transformer shall be 25 feet (min.) when the company's primary system is of a DELTA configuration and 3 feet (min.); for all other primary systems to maintain safe working conditions. The last 3 feet to the Company's transformer or handhole box shall be **HAND DUG BY THE CUSTOMER**, including exposing the side (depth) of the Company's equipment.

D. Customer to supply all equipment and install, where necessary, proper waterproofing on or in their service equipment.

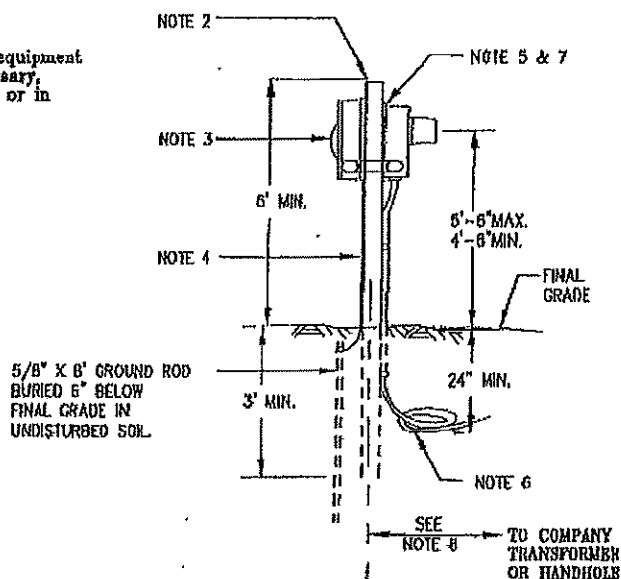


FIG. 10 - TEMPORARY SERVICE FROM UNDERGROUND FACILITIES

NOTE: CALL BEFORE YOU DIG, SEE PREFIX PAGE 14 FOR THE UNDERGROUND MARK OUT NUMBER IN YOUR AREA.

ELECTRICAL CONTRACTOR CERTIFICATION:

I Certify that the Metering Installation has been constructed in conformance with the applicable PCLP specifications and that all requirements stated herein are complete and the installation is ready for inspection by PCLP.

Project Name and Location: _____
 Electrician (please print): _____ Signature: _____
 Company: _____ Date: _____
 to the attention of: _____

NOTE: Initial inspections are conducted by PCLP at no charge. Re-inspection fees may apply if installation fails initial inspection.

Please FAX this completed checklist to _____

Fax completed checklist to (570) 832-2989 to the attention of: _____

URD TO POLE

Request for Inspection Checklist - Underground Service to Pole

As a licensed contractor, you know that PCLP's specifications and procedures are less complicated than the national codes you deal with every day. However, Please review this checklist to refresh your knowledge of PCLP's specification and procedural requirements. Please indicate "Y" in the applicable box under "Contractor Complete" column and N/A where items do not apply. Not that PCLP still requires a Cut-in card before energization will take place.

Application #	Contractor Completed	PCLP Inspection (P/F)
METERING REQUIREMENTS		
Metering constructed at company approved location.		
4' minimum clearance in front of metering and accessible		
Pike County Light & Power approved meter pan must be used. Approved lists available at http://pclpeg.com/contractor-resources/		
Catalog number: _____		
Meter pan center is at a height of 4'6" to 5'6" from grade.		
Meter pan is equipped with 5" jaw at 9 o'clock position or 7th jaw at 6 o'clock for three phase applications.		
Meter pan is wired line side up and load side down.		
For 200 amp, 480v services only		
Non-fusible disconnect installed ahead of the meter shall have provisions to be padlocked and sealed by the company. Note - This is not the service disconnect.		
If mutiple meters:		
The electrician shall "ring out" and label each meter location and each individual "units" sub-panel with a permanent marking clearly identifying the specific space or aptment to be served.		
Multi-unit buildings must be identifiable by completed framing and elctrical rough in and marked with the final unit number.		
SERVICE LINE REQUIREMENTS:		
Service entrances at Company-approved location shall not be over 250' for services up to 200 amps and 150' for services over 200 amps from the company's designated connection point.		
Work location is safe to traverse with no open trenches or holes		
Company has approved pole as suitable for riser		
Each service wire is identified at the Company's connection point and in the meter enclosure in accordance with NEC requirements.		
For Combination trenches:		
All other utilities are installed before energization i.e. gas, cable, phone.		
Riser conduit (Check one): <input type="checkbox"/> 2" <input type="checkbox"/> 3" <input type="checkbox"/> 4" (Half sixes are NOT acceptable)		
# of conduits used: _____		
Riser conduit material used (Check one): <input type="checkbox"/> Schedule 80 PVC <input type="checkbox"/> Galvanized Steel		
If steel riser is used:		
The pipe ground clamp & #2 AWG Cu. Wire are atatched.		
Riser is located away from traffic on the inner side of the pole.		
Riser is secured to the pole with lag bolts and at least 3 metal two-hold straps.		
Enough wire is provided to reach the top of the pole.		
A clear path is available up the pole in-line with the riser conduit,		

ELECTRICAL CONTRACTOR CERTIFICATION:

I Certify that the Metering Installation has been condtructed in conformance with the applicable PCLP specifications and that all requirements stated herein are complete and the installation is ready for inspection by PCLP.

Project Name and Location: _____

Electrician (please print): _____

Signature: _____

Company: _____

Date: _____ Phone #: _____

Please FAX this completed checklist to _____

to the attention of: _____

NOTE: Initial inspections are conducted by PCLP at no charge. Re-inspection fees may apply if installation fails initial inspection.

Fax completed checklist to (570) 832-2989 to the attention of: _____

URD

Request for Inspection Checklist - Underground Service to XFMR/Handhole

As a licensed contractor, you know that PCLP's specifications and procedures are less complicated than the national codes you deal with every day. However, Please review this checklist to refresh your knowledge of PCLP's specification and procedural requirements. Please indicate "Y" in the applicable box under "Contractor Complete" column and N/A where items do not apply. Not that PCLP still requires a Cut-In card before sheduling for energization will take place.

Application #	Contractor Completed	PCLP Inspection (P/F)
METERING REQUIREMENTS		
Metering located at company approved location.		
4' minimum clearance in front of metering and accessible		
Pike County Light & Power approved meter pan must be used. Approved lists available at http://pclpeg.com/contractor-resources/ Catalog Number: _____		
Meter pan center is at a height of 4'6" to 5'6" from grade.		
Meter pan is equipped with 5th jaw at 9o'clock position or 7th jaw at 6 o'clock for three phase applications.		
Meter pan is wired line side top and load side bottom.		
For 200 amp, 480v services only Non-fusible disconnect installed ahead of the meter shall have provisions to be padlocked and sealed by the company. Note - This is not the service disconnect.		
If multiple meters: The electrician shall "ring out" and label each meter location and each 'individuals units' sub-panel with a permanent marking clearly identifying the specific space or apartment being served.		
Multi-unit buildings must be identifiable by completed framing and electrical riugh in and marked with the fianl unit number.		
SERVICE LINE REQUIREMENTS:		
Service entrances at Company-approved location shall not be over 250' for services up to 200 amps and 150' for services over 200 amps from the company's designated connection point.		
Work location is safe to traverse with no open trenches or holes		
Each service wire is identified at the Company's connection point and in the meter enclosure in accordance with NEC requirements.		
For combination trenches: All other utilities are installed before energization i.e. gas, cable, phone.		
For NJ Subdivisions Company Dig" Sweep and expansion coupling installed into meter pan.		
At least 15' of wire is left coiled by the handhole/boxpad/transformer.		
The last 3' of the trench from the handhole/boxpad/transformer is hand dug and left open for our access. The remaining trench is backfilled		
The conduit is termintaed 3' from the company's handhole/boxpad/transformer		

ELECTRICAL CONTRACTOR CERTIFICATION:

I Certify that the Metering Installation has been condtructed in conformance with the applicable PCLP specifications and that all requirements stated herein are complete and the installation is ready for inspection by PCLP.

Project Name and Location: _____

Electrician (please print): _____

Signature: _____

Company: _____

Date: _____ Phone #: _____

Please FAX this completed checklist to _____

to the attention of: _____

NOTE: Initial inspections are conducted by PCLP at no charge. Re-inspection fees may apply if installation fails initial inspection.

Fax completed checklist to (570) 832-2989 to the attention of: _____

Integrated Meter Socket and CT Cabinet Assemblies 120/240 Cav 1 Phase 3 wire, service 200 to 800 Amperes			
Manufacture	Ampere Rating	Catalog Number	Description
Delta Metal Products	200-400	4CT-1-OR	Ringless design device, Trans-S integrated meter socket and current transformer cabinet equipped with MS7P-1-OR single phase 7 position test switch
	400-800	8CT-1-OR	Ringless design device, Trans-S integrated meter socket and current transformer cabinet equipped with MS7P-1-OR single phase 7 position test switch
Nav-Tech, Inc	200-400	TS-400-208(1)O&R	Ringless design device, Trans-S integrated meter socket and current transformer cabinet equipped with MS7P-OR single phase 7 position test switch
	400-800	TS-800-208(1)O&R	Ringless design device, Trans-S integrated meter socket and current transformer cabinet equipped with MS7P-OR single phase 7 position test switch

Transformer Rated Meter Socket and Test Switch Only		
Manufacture	Catalog Number	Description
Meter Devices Company, Inc.	602U3060C6-033	120/240 Cav 1 phase 3 wire, Ringless design meter socket with 7 position test switch. Requires use of a current transformer cabinet.
Delta Metal Products	MS7P-1-OR	120/240 Cav 1 phase 3 wire, Ringless design meter socket with 7 position test switch. Requires use of a current transformer cabinet.
Nav-Tech, Inc.	MS 7P-OR	120/240 Cav 1 phase 3 wire, Ringless design meter socket with 7 position test switch. Requires use of a current transformer cabinet.

Current Transformer Cabinet Assemblies			
Manufacture	Ampere Rating	Catalog Number	Description
Delta Metal Products	200-400	R4CT-1-OR (remote)	Remote current transformer cabinet, requires a meter socket and test switch. For Single Phase applications only.
	400-800	R8CT-1-OR (remote)	Remote current transformer cabinet, requires a meter socket and test switch. For Single Phase applications only.
East Coast Panelboard Co.	400-800	CTR-800R	Remote current transformer cabinet, requires a meter socket and test switch. For Single Phase applications only.
Meter Devices	400-800	507U7591	Remote current transformer cabinet, requires a meter socket and test switch. For Single Phase applications only.

Potential Transformer Cabinet Assemblies			
Manufacture	Voltage Rating	Catalog Number	Description
East Coast Panelboard Co.	277/480	EC-PTR	For use on 277/480 volt services requiring metering potential transformers.

Multi-Meter Assemblies - 120/240 Vac 1 Phase 3 wire

Manufacture	Amperes Per Position	Number of positions	Main Bus Rating in Amperes	Catalog Number	Description
Square D	125	2	200	MPH22125	Ringless design device, must be supplied with 5 jaw meter socket and horn bypass. Must be supplied with individual position barrel lock covers.
		3	300	MPH33125	
		4	400	MPH44125	
		5	500	MPH55125	
		6	600	MPH66125	
Square D	200	2	200	MPH42200	Ringless design device, must be supplied with 5 jaw meter socket and horn bypass. Must be supplied with individual position barrel lock covers.
		3	300	MPH43200	
		4	400	MPH64200	
		5	500	MPH85200	
		6	600	MPH86200	
Square D	225	2	300	MPL32225	Ringless design device, must be supplied with 5 jaw meter socket and horn bypass. Must be supplied with individual position barrel lock covers.
		3	500	MPL53225	
		4	600	MPL64225	
Siemens	125	2	200	SP2211RJB	Ringless design device, must be supplied with 5 jaw meter socket and horn bypass. Must be supplied with individual position barrel lock covers.
		3	300	SP3311RJB	
		4	400	SP4411RJB	
		5	400	SP4511RJB	
		6	400	SP4611RJB	
		5	600	SP6411RJB	
		6	600	SP6611RJB	
Siemens	200	2	400	SP4212RJB	Ringless design device, must be supplied with 5 jaw meter socket and horn bypass. Must be supplied with individual position barrel lock covers.
		3	400	SP4312RJB	
		4	400	SP4412RJB	
		5	600	SP6512RJB	
		6	600	SP6612RJB	
Siemens	125	2	200	WP2211RJB	Ringless design device, must be supplied with 5 jaw meter socket and horn bypass. Must be supplied with individual position barrel lock covers.
		3	300	WP3311RJB	
		4	400	WP4411RJB	
		5	400	WP4511RJB	
		6	400	WP4611RJB	
		4	500	WP5411RJB	
		5	600	WP6511RJB	
		6	600	WP6611RJB	
Siemens	225	2	400	WP4212RJB	Ringless design device, must be supplied with 5 jaw meter socket and horn bypass. Must be supplied with individual position barrel lock covers.
		3	400	WP4312RJB	
		4	400	WP4412RJB	
		4	600	WP6412RJB	
		5	600	WP6512RJB	
		6	600	WP6612RJB	
		6	800	WP8612RJB	
		6	1000	WP10612RJB	

Siemens	225	2	400	WP4212RJB	Ringless design device, must be supplied with 5 jaw meter socket and horn bypass. Must be supplied with individual position barrel lock covers.
		3	400	WP4312RJB	
		4	400	WP4412RJB	
		4	600	WP6412RJB	
		5	600	WP6512RJB	
		6	600	WP6612RJB	
		6	800	WP8612RJB	
Eaton/Cutler - Hammer*	125	2	200	1MP212RRLB	Ringless design device, must be supplied with FIELD INSTALLED, bonded 5th socket meter jaw (Cat#1MM5JK) in the 9 o'clock position and horn bypass. Must be supplied with individual position, through the cover barrel lock provisions.
		3	400	1MP3124RRLB	
		4	400	1MP4124RRLB	
		5	600	1MP5126RRLB	
		6	600	1MP6126RRLB	
Eaton/Cutler - Hammer*	170	2	400	1MP2204RRLB	Ringless design device, must be supplied with FIELD INSTALLED, bonded 5th socket meter jaw (Cat#1MM5JK) in the 9 o'clock position and horn bypass. Must be supplied with individual position, through the cover barrel lock provisions. See Application Note 1.
		3	600	1MP3206RRLB	
		4	600	1MP4206RRLB	
		5	600	1MP5206RRLB	
		6	600	1MP6206RRLB	

*Approval tentative pending required design changes

NOTE 1: Not for use on 200 ampere services. Refer to manufactureres continuois rating for application use.

Multi-Meter Assemblies - 120/240 Vac 1 Phase 3 wire in, 1 phase 3 wire out

Manufacture	Amperes Per Position	Number of positions	Main Bus Rating in Amperes	Catalog Number	Description
Square D	125	3	800	EZMH113125	Ringless design device, must be supplied with 5 jaw meter socket and horn bypass. Must be supplied with individual position barrel lock covers.
		4	800	EZMH114125	
		5	800	EZMH115125	
Square D	225	2	800	EZMH112225	Ringless design device, must be supplied with 5 jaw meter socket and horn bypass. Must be supplied with individual position barrel lock covers.
		3	800	EZMH113225	
		4	800	EZMH114225	
Square D	225	1	800	EZML111225	Ringless design device, must be supplied with 5 jaw lever bypass meter socket type HQ-5 and individual position barrel lock covers.
		2	800	EZML112225	
		3	800	EZML113225	
		4	800	EZML114225	
Siemens	225	1	1200	WML11225RJ	Ringless design device, must be supplied with 5 jaw lever bypass meter socket type HQ-5 and individual position barrel lock covers.
		2	1200	WML21225RJ	
		3	1200	WML31225RJ	
		4	1200	WML41225RJ	

Eaton/Cutler - Hammer*	125	3	800	1MM312RRLB	Ringless design device, must be supplied with FIELD INSTALLED, bonded 5th socket meter jaw (Cat#1MM5JK) in the 9 o'clock position and horn bypass. Must be supplied with individual position, through the cover barrel lock provisions.
		4	800	1MM412RRLB	
		5	800	1MM512RRLB	
Eaton/Cutler - Hammer*	170	3	800	1MM320RRLB	Ringless design device, must be supplied with FIELD INSTALLED, bonded 5th socket meter jaw (Cat#1MM5JK) in the 9 o'clock position and horn bypass. Must be supplied with individual position, through the cover barrel lock provisions. See Application Note 1.
		4	800	1MM420RRLB	

*Approval tentative pending required design changes

Note1: Not for use on 200 ampere services. Refer to manufactures continuous rating application use.

Multi-Meter Assemblies - 208Y/120 Vac 3 Phase 4 wire in, 1 phase 3 wire out					
Manufacture	Amperes Per Position	Number of positions	Main Bus Rating in Amperes	Catalog Number	Description
Square D	125	3	800	EZMH313125	Ringless design device, must be supplied with 5 jaw meter socket and horn bypass. Must be supplied with individual position barrel lock covers.
		4	800	EZMH314125	
		5	800	EZMH315125	
Square D	225	2	800	EZML312225	Ringless design device, must be supplied with 5 jaw meter socket and horn bypass. Must be supplied with individual position barrel lock covers.
		3	800	EZML313225	
		4	800	EZML314225	
Siemens	125	2	1200	WMM21125RJB	Ringless design device, must be supplied with 5 jaw meter socket and horn bypass. Must be supplied with individual position barrel lock covers.
		3	1200	WMM31125RJB	
		4	1200	WMM41125RJB	
		5	1200	WMM51125RJB	
		6	1200	WMM61125RJB	
Siemens	125	2	1200	WMM22125RJB	Ringless design device, must be supplied with 5 jaw meter socket and horn bypass. Must be supplied with individual position barrel lock covers.
		3	1200	WMM32125RJB	
		4	1200	WMM42125RJB	
		5	1200	WMM52125RJB	
		6	1200	WMM62125RJB	
Siemens	225	2	1200	WMM21225RJB	Ringless design device, must be supplied with 5 jaw meter socket and horn bypass. Must be supplied with individual position barrel lock covers.
		3	1200	WMM31225RJB	
		4	1200	WMM41225RJB	
		5	1200	WMM51225RJB	
		6	1200	WMM61225RJB	
Siemens	225	2	1200	WMM22225RJB	Ringless design device, must be supplied with 5 jaw meter socket and horn bypass. Must be supplied with individual position barrel lock covers.
		3	1200	WMM32225RJB	
		4	1200	WMM42225RJB	
		5	1200	WMM52225RJB	
		6	1200	WMM62225RJB	
Siemens	225	1	1200	WML1225RJB	Ringless design device, must be supplied with 5 jaw meter socket and horn bypass. Must be supplied with individual position barrel lock covers.
		2	1200	WML22AB225RJ	
		2	1200	WML22BC225RJ	
		2	1200	WML22CA225RJ	
		3	1200	WML32225RJ	
		4	1200	WML42AB225RJ	
		4	1200	WML42BC225RJ	
		4	1200	WML42CA225RJ	

Eaton/Cutler - Hammer*	225	1	1200	35MM120R12	Ringless design device, must be supplied with 5 jaw meter socket and horn bypass. Must be supplied with individual position barrel lock covers.
		2	1200	33MM220R12	
		3	1200	35MM320R12	
		4	1200	35MM420R12	
Eaton/Cutler - Hammer*	125	2	800	3MM212RRLB	Ringless design device, must be supplied with FACTORY INSTALLED 5 jaw meter socket and horn bypass. Must be supplied with individual position barrel lock covers.
		3	800	3MM312RRLB	
		4	800	3MM412RRLB	
		5	800	3MM512RRLB	
Eaton/Cutler - Hammer*	170	2	800	3MM220RRLB	Ringless design device, must be supplied with FACTORY INSTALLED 5 jaw meter socket and horn bypass. Must be supplied with individual position barrel lock covers
		3	800	3MM320RRLB	
		4	800	3MM420RRLB	

*Approval tentative pending required design changes

Note1: Not for use on 200 ampere services. Refer to manufactures continuous rating application use.

Multi-Meter Assemblies - 208Y/120 Vac 3 Phase 4 wire in, 1 phase 3 wire out						
Manufacture	Amperes Per Position	Number of positions	Main Bus Rating in Amperes	Catalog Number	Description	
Square D	225	2	800	EZML31225	Ringless design device, must be supplied with 5 jaw lever bypass meter socket type HQ-5 and individual position barrel lock covers.	
		3	800	EZML313225		
		4	800	EZML314225		
		1	1200	W2MM1200		
Siemens	200	2	1200	W2MM2AB200	Ringless design device, must be supplied with 5 jaw lever bypass meter socket type HQ-5 and individual position barrel lock covers.	
		2	1200	W2MM2BC200		
		2	1200	W2MM2CA200		
		3	1200	W2MM3200		
		4	1200	W2MM4AB200		
		4	1200	W2MM4BC200		
		4	1200	W2MM4CA200		

Multi-Meter Assemblies - 208Y/120 Vac 3 Phase 4 wire or 240/120 Delta in, 3 phase 4 wire out						
Manufacture	Amperes Per Position	Number of positions	Main Bus Rating in Amperes	Catalog Number	Description	
Square D	225	1	1200	EZML331225	Ringless design device, must be supplied with 7 jaw lever bypass meter socket type HQ-7 and individual position barrel lock covers.	
		2	1200	EZML332225		
		3	1200	EZML333225		
		4	1200	EZML334225		
Siemens	100	1	1200	WML13100RJ	Ringless design device, must be supplied with 7 jaw lever bypass meter socket type HQ-7 and individual position barrel lock covers.	
		2	1200	WML23100RJ		
		3	1200	WML33100RJ		
		4	1200	WML43100RJ		
Siemens	225	1	1200	WML13225RJ	Ringless design device, must be supplied with 7 jaw lever bypass meter socket type HQ-7 and individual position barrel lock covers.	
		2	1200	WML23225RJ		
		3	1200	WML33225RJ		
		4	1200	WML43225RJ		
Eaton/Cutler - Hammer	225	1	1200	37MM120R12	Ringless design device, must be supplied with 7 jaw meter socket and lever bypass. Must be supplied with individual position barrel lock covers.	
		2	1200	37MM220R12		
		3	1200	37MM320R12		
		4	1200	37MM420R12		

Current Transformer Cabinet Assemblies			
Manufacture	Rating	Catalog Number	Description
Delta Metal Products	200-400	R4CT-3-OR 9(remote)	Remote current transformer cabinet, requires a meter socket and test switch. For Polyphase applications only.
	400-800	R8CT-3-OR (remote)	Remote current transformer cabinet, requires a meter socket and test switch. For Polyphase applications only.
East Coast Panelboard Co.	400-800	CTR-800R	Remote current transformer cabinet, requires a meter socket and test switch. For Single Phase or Polyphase applications.
Meter Devices	400-800	507U7591	Remote current transformer cabinet, requires a meter socket and test switch. For Single Phase or Polyphase applications.

Potential Transformer Cabinet Assemblies			
Manufacture	Rating	Catalog Number	Description
East Coast Panelboard Co.	277/480	EC-PTR	For use on 277/480 volt services requiring metering potential transformers.

Primary Meter Cabinet Assemblies			
Manufacture	Rating	Catalog Number	Description
Meter Devices		507U4163	Outside double door meter cabinet, NEMA 3 construction. 32"w x 36"h x 16"d.

Integrated Meter Socket and CT Cabinet Assemblies - 3 Phase 4 wire wye and delta service to 200 to 800 Amperes.

NOT FOR USE ON 277/480 VOLT SERVICE

Manufacture	Ampere Rating	Catalog Number	Description
Delta Metal Products	200-400	4CT-3-OR	Ringless design device, Trans-S integrated meter socket and current transformer cabinet equipped with MS10P-3-OR Three phase 10 position test switch
	400-800	4CT-3-OR	Ringless design device, Trans-S integrated meter socket and current transformer cabinet equipped with MS10P-3-OR Three phase 10 position test switch
Nav-Tech, Inc.	200-400	4CT-3-OR	Ringless design device, Trans-S integrated meter socket and current transformer cabinet equipped with MS 10P--OR Three phase 10 position test switch
	400-800	4CT-3-OR	Ringless design device, Trans-S integrated meter socket and current transformer cabinet equipped with MS 10P--OR Three phase 10 position test switch

Transformer Rated meter Socket and test Switch Only

Manufacture	Catalog Number	Description
Meter Devices Company, Inc.	602U3060C13-032	3 phase 4 wire wye 120/208 and 277/480 Vac service, Ringless design meter socket with 10 position test switch. Requires use of a current transformer cabinet. Potential transformer cabinet required for 277/480 volt service, refer to company specifications for 277/480 volt service installation.
	602U3060C13-833	3 Phase 4 wire wye 120/208, and phase 3 4 wire Delta service, Ringless design meter socket with 10 position test switch. Requires use of a current transformer cabinet. Not for use on 277/480 volt services.
Delta Metal Products	MS10P-3-OR	3 Phase 4 wire wye 120/208, and phase 3 4 wire Delta service, Ringless design meter socket with 10 position test switch. Requires use of a current transformer cabinet. Not for use on 277/480 volt services.
Nav-Tech, Inc.	MS10P-OR	3 Phase 4 wire wye 120/208, and phase 3 4 wire Delta service, Ringless design meter socket with 10 position test switch. Requires use of a current transformer cabinet. Not for use on 277/480 volt services.

Current Transformer Cabinet Assemblies			
Manufacture	Ampere Rating	Catalog Number	Description
Milbank	200	U1854-XL-QG-BLG-LI	Ringless design device for OH/UG service, must be supplied with a PCL&P approved 7 - jaw lever bypass meter socket
Durham	200	1005764	Ringless design device for OH/UG service, must be supplied with a PCL&P approved 7 - jaw lever bypass meter socket
Eaton/Cutler Hammer	200	U-E7213C-CC-CH	Ringless design device for OH/UG service, must be supplied with a PCL&P approved 7 - jaw lever bypass meter socket
	200	U-H7213C-CC-CH	Ringless design device for OH/UG service, must be supplied with a PCL&P approved 7 - jaw lever bypass meter socket
	200	1005764-CH	Ringless design device for OH/UG service, must be supplied with a PCL&P approved 7 - jaw lever bypass meter socket
Square D	200	1005764-SQD	Ringless design device for OH/UG service, must be supplied with a PCL&P approved 7 - jaw lever bypass meter socket
Midwest Electric Products	200	1005764-MEP	Ringless design device for OH/UG service, must be supplied with a PCL&P approved 7 - jaw lever bypass meter socket
Siemens	200	S40417-02SP	Ringless design device for OH/UG service, must be supplied with a PCL&P approved 7 - jaw lever bypass meter socket
Landis & Gyr	200	40407-02SSP	Ringless design device for OH/UG service, must be supplied with a PCL&P approved 7 - jaw lever bypass meter socket
Murray	200	RH173GRJ	Ringless design device for OH/UG service, must be supplied with a PCL&P approved 7 - jaw lever bypass meter socket
	200	RH173GRF	Ringless design device for OH/UG service, must be supplied with a PCL&P approved 7 - jaw lever bypass meter socket

Self Contained One Meter Assemblies - 120/240 Vac 1 Phase 3 wire, 320 Ampere service ONLY.			
Manufacture	Ampere rating	Catalog Number	Description
Siemens	320	S48105-83BU	Ringless design sidewire device for OH/UG service only, must be supplied with a 5-jaw lever bypass meter socket.
Talon	320	48105-83BU	Ringless design sidewire device for OH/UG service only, must be supplied with a 5-jaw lever bypass meter socket.
Murray	320	RK178C-LI	Ringless design sidewire device for OH/UG service only, must be supplied with a 5-jaw lever bypass meter socket.
Milbank	320	U3885-X-BLG	Ringless design sidewire device for OH/UG service only, must be supplied with a 5-jaw lever bypass meter socket.

Self Contained MultiplePosition Meter Assemblies - 120/240 Vac 1 Phase 3 wire service.			
Manufacture	Ampere rating	Catalog Number	Description
Durham	100 Per Position	1004399A	Two position ringless design device with end feed for OH/UG service, must be supplied with a 5-jaw horn bypass meter sockets
Eaton/Cutler Hammer	100 Per Position	1004399A-CH	Two position ringless design device with end feed for OH/UG service, must be supplied with a 5-jaw horn bypass meter sockets
Square D	100 Per Position	1004399A-SQD	Two position ringless design device with end feed for OH/UG service, must be supplied with a 5-jaw horn bypass meter sockets
Midwest Electric Products	100 Per Position	1004399A-MEP	Two position ringless design device with end feed for OH/UG service, must be supplied with a 5-jaw horn bypass meter sockets
Siemens	100 Per Position	SUA2311-XBBU	Two position ringless design device with end feed for OH/UG service, must be supplied with a 5-jaw horn bypass meter sockets
	100 Per Position	SUA3311-XBBU	Three position ringless design device with end feed for OH/UG service, must be supplied with a 5-jaw horn bypass meter sockets
	100 Per Position	SUA4311-XBBU	Four position ringless design device with end feed for OH/UG service, must be supplied with a 5-jaw horn bypass meter sockets
Talon	100 Per Position	UA2311-XBUU	Two position ringless design device with end feed for OH/UG service, must be supplied with a 5-jaw horn bypass meter sockets
	100 Per Position	UA3311-XBBU	Three position ringless design device with end feed for OH/UG service, must be supplied with a 5-jaw horn bypass meter sockets
	100 Per Position	UA4311-XBBU	Four position ringless design device with end feed for OH/UG service, must be supplied with a 5-jaw horn bypass meter sockets

Self Contained One Meter Assemblies - 120/240 Vac 1 Phase 3 wire, service 100 Ampere			
Manufacture	Ampere Rating	Catalog Number	Description
Milbank	100	U1770-YL-TG-KK-BLG	Ringless design device for OH/UG service, must be supplied with a 5-jaw horn bypass meter socket.
Durham	125	1003880A	Ringless design device for OH/UG service, must be supplied with a 5-jaw horn bypass meter socket.
Eaton/Cutler - Hammer	125	1003880A-CH	Ringless design device for OH/UG service, must be supplied with a 5-jaw horn bypass meter socket.
Square D	125	1003880A-SQD	Ringless design device for OH/UG service, must be supplied with a 5-jaw horn bypass meter socket.
Midwest Electric Products	125	1003880A-MEP	Ringless design device for OH/UG service, must be supplied with a 5-jaw horn bypass meter socket.
Siemens	135	SUAT1111-0MSP	Ringless design device for OH/UG service, must be supplied with a 5-jaw horn bypass meter socket.
		SUAT111-0PV	
		SUAT111-XQA	
Talon	135	UAT111-0MSP	Ringless design device for OH/UG service, must be supplied with a 5-jaw horn bypass meter socket.
		UAT111-XMBL	
		UAT111-XQA	

Self Contained One Meter Assemblies - 120/240 Vac 1 Phase 3 wire, service 200 Amperes or less			
Manufacture	Ampere Rating	Catalog Number	Description
Milbank	200	U3042-XL-QG-BLG	Ringless design device for OH/UG service, must be supplied with a 5-jaw lever bypass meter socket.
	200	U8173-XL-KK-BLG	Ringless design device for UG service only, must be supplied with a 5-jaw lever bypass meter socket.
	200	U3599-O-KK-BLG	Ringless design device for OH/UG service, must be supplied with a 5-jaw lever bypass meter socket.
	200	U8729-DL-KK-BLG	Ringless design device for OH service only, must be supplied with a 5-jaw lever bypass meter socket.
Durham	200	1003879A	Ringless design device for OH service only, must be supplied with a 5-jaw lever bypass meter socket.
	200	1004967B	Ringless design device for UG service only, must be supplied with a 5-jaw lever bypass meter socket.
	200	1003878A	Ringless design device for OH/UG service, must be supplied with a 5-jaw lever bypass meter socket.
	200	1005763	Ringless design device for OH/UG service, must be supplied with a 5-jaw lever bypass meter socket.
Eaton/Cutler - Hammer	200	1003879A-CH	Ringless design device for OH service only, must be supplied with a 5-jaw lever bypass meter socket.
	200	1004967B-CH	Ringless design device for UG service only, must be supplied with a 5-jaw lever bypass meter socket.
	200	1003878A-CH	Ringless design device for OH/UG service, must be supplied with a 5-jaw lever bypass meter socket.
	200	1005763-CH	Ringless design device for OH/UG service, must be supplied with a 5-jaw lever bypass meter socket.
	200	UG-H4213C-CC-CH	Ringless design device for OH/UG service, must be supplied with a 5-jaw lever bypass meter socket.
	200	UG-E4213C-CC-CH	Ringless design device for OH/UG service, must be supplied with a 5-jaw lever bypass meter socket.

Square D	200	1003879A-SQD	Ringless design device for OH service only, must be supplied with a 5-jaw lever bypass meter socket.
	200	1004967B-SQD	Ringless design device for UG service only, must be supplied with a 5-jaw lever bypass meter socket.
	200	1003878A-SQD	Ringless design device for OH/UG service, must be supplied with a 5-jaw lever bypass meter socket.
	200	1005763-SQD	Ringless design device for OH/UG service, must be supplied with a 5-jaw lever bypass meter socket.
Midwest Electric Products	200	10038789A-MEP	Ringless design device for OH service only, must be supplied with a 5-jaw lever bypass meter socket.
	200	1004967B-MEP	Ringless design device for UG service only, must be supplied with a 5-jaw lever bypass meter socket.
	200	1003878A-MEP	Ringless design device for OH/UG service, must be supplied with a 5-jaw lever bypass meter socket.
	200	1005763-MEP	Ringless design device for OH/UG service, must be supplied with a 5-jaw lever bypass meter socket.
Siemens	200	SUAT317-0FP	Ringless design device for OH service only, must be supplied with a 5-jaw lever bypass meter socket.
	200	SUAT417-XFP	Ringless design device for OH/UG service, must be supplied with a 5-jaw lever bypass meter socket.
	200	SUAS877-PPGP	Ringless design device for UG service only, must be supplied with a 5-jaw lever bypass meter socket.
		SUAS817-PFP	
200	S40405-015F	Ringless design device for OH/UG service, must be supplied with a 5-jaw lever bypass meter socket.	
Talon	200	UAT317-0FP	Ringless design device for OH service only, must be supplied with a 5-jaw lever bypass meter socket.
	200	UAT417-XMBL	Ringless design device for OH/UG service, must be supplied with a 5-jaw lever bypass meter socket.
	200	UAT417-XFP	Ringless design device for OH/UG service, must be supplied with a 5-jaw lever bypass meter socket.
	200	UAS887-PPGP	Ringless design device for UG service only, must be supplied with a 5-jaw lever bypass meter socket.
		UAS817-PFP	
200	40405-020C	Ringless design device for OH/UG service, must be supplied with a 5-jaw lever bypass meter socket.	
Murray	200	RH173CRF	Ringless design device for OH/UG service, must be supplied with a 5-jaw lever bypass meter socket.

Integrated Meter Socket and CT Cabinet Assemblies - 120/240 Vac 1 Phase 3 wire, service 200 to 800 Amperes			
Manufacture	Ampere Rating	Catalog Number	Description
Delta Metal Products	200-400	4CT-1-1OR	Ringless design device, Trans-S integrated meter socket and current transformer cabinet equipped with MS7P-1-OR single phase 7 position test switch
	400-800	8CT-1-OR	Ringless design device, Trans-S integrated meter socket and current transformer cabinet equipped with MS7P-1-OR single phase 7 position test switch
Nav-Tech, Inc.	200-400	TS-400-208(1)O&R	Ringless design device, Trans-S integrated meter socket and current transformer cabinet equipped with MS7P-OR single phase 7 position test switch
	400-800	TS-800-208(1)O&R	Ringless design device, Trans-S integrated meter socket and current transformer cabinet equipped with MS7P-OR single phase 7 position test switch

Transformer Rated Meter Socket and Test Switch Only		
Manufacture	Catalog Number	Description
Meter Devices Compnay, Inc.	602U3060C6-033	120/240 Vac 1 phase 3 wire, Ringless design meter socket with 7 position test switch. Requires use of a current transformer cabinet.
Delta Metal Products	MS7P-1-OR	120/240 Vac 1 phase 3 wire, Ringless design meter socket with 7 position test switch. Requires use of a current transformer cabinet.
Nav-Tech, Inc.	MS7P-OR	120/240 Vac 1 phase 3 wire, Ringless design meter socket with 7 position test switch. Requires use of a current transformer cabinet.

Current Transformer Cabinet Assemblies			
Manufacture	Ampere Rating	Catalog Number	Description
Delta Metal Products	200-400	R4CT-1-OR (remote)	Remote current transformer cabinet, requires a meter socket and test switch. For Single Phase applications only.
	400-800	R8CT-1-OR (remote)	Remote current transformer cabinet, requires a meter socket and test switch. For Single Phase applications only.
East Coast Panelboard Co.	400-800	CTR-800R	Remote current transformer cabinet, requires a meter socket and test switch. For Single Phase applications only.
Meter Devices	400-800	507U7591	Remote current transformer cabinet, requires a meter socket and test switch. For Single Phase applications only.

Potential Transformer Cabinet Assemblies			
Manufacture	Voltage Rating	Catalog Number	Description
East Coast Panelboard Co.	277/480	EC-PTR	For use on 277/480 volt services requiring metering potential transformers.

Durham	200 Per Position	1004418A	Two position ringless design device with center feed for OH/UG service, must be supplied with 5-jaw horn bypass meter sockets
Eaton/Cutler-Hammer	200 Per Position	1004418A-CH	Two position ringless design device with center feed for OH/UG service, must be supplied with 5-jaw horn bypass meter sockets
Square D	200 Per Position	1004418A-SQD	Two position ringless design device with center feed for OH/UG service, must be supplied with 5-jaw horn bypass meter sockets
Midwest Electric Products	200 Per Position	1004418A-MEP	Two position ringless design device with center feed for OH/UG service, must be supplied with 5-jaw horn bypass meter sockets
Milbank	200 Per Position	U1252-X-KK-BLG	Two position ringless design device, must be supplied with 5-jaw horn bypass meter sockets

Self Contained Combination Service Entrance Assemblies - 120/240 Vac 1 Phase 3 wire, service

Manufacture	Ampere Rating	Catalog Number	Description
Square D	100	RC816F100CH	Ringless design device for OH/UG service only, must be supplied with a 5-jaw horn bypass meter socket. Requires 5th Jaw kit, catalog number 5J.
	125	RC816F125CH	Ringless design device for OH/UG service only, must be supplied with a 5-jaw horn bypass meter socket. Requires 5th Jaw kit, catalog number 5J.
	150	RC816F150CH	Ringless design device for OH/UG service only, must be supplied with a 5-jaw horn bypass meter socket. Requires 5th Jaw kit, catalog number 5J.
	200	RC816F200CH	Ringless design device for OH/UG service only, must be supplied with a 5-jaw horn bypass meter socket. Requires 5th Jaw kit, catalog number 5J.
Murray	200	JC0406L1200RHJB	Ringless design sidewire device for OH/UG service only, must be supplied with a 5-jaw horn bypass meter socket.
Milbank	200	U5880-XL-200-5T9-BLG	Ringless design sidewire device for OH/UG service only, must be supplied with a 5-jaw horn bypass meter socket.

Self Contained Temporary Service - 120/240 Vac 1 Phase 3 wire, service 100 Amperes			
Manufacture	Ampere Rating	Catalog Number	Description
Challenger	125	CER3G7N7NS	Ringless design device, metered power outlet panel with breakers and receptacles, for OH/UG services. 5-jaw meter socket.

Service End Boxes Utilized for Service Taps

Manufacture	Dimensions			Remarks:
	10" x 10" x 5"	12" x 12" x 8"	24" x 12" x 8"	
Delta Metal Products	RT-D205	RT-D220	RT-D215	Installation must comply with the latest revision of the NEC.
Milbank	SA-10105-SC3R-SP1		SA-24128-SC3R-SP1	
			RT-D484 SA-301812-SC3R-SP1	